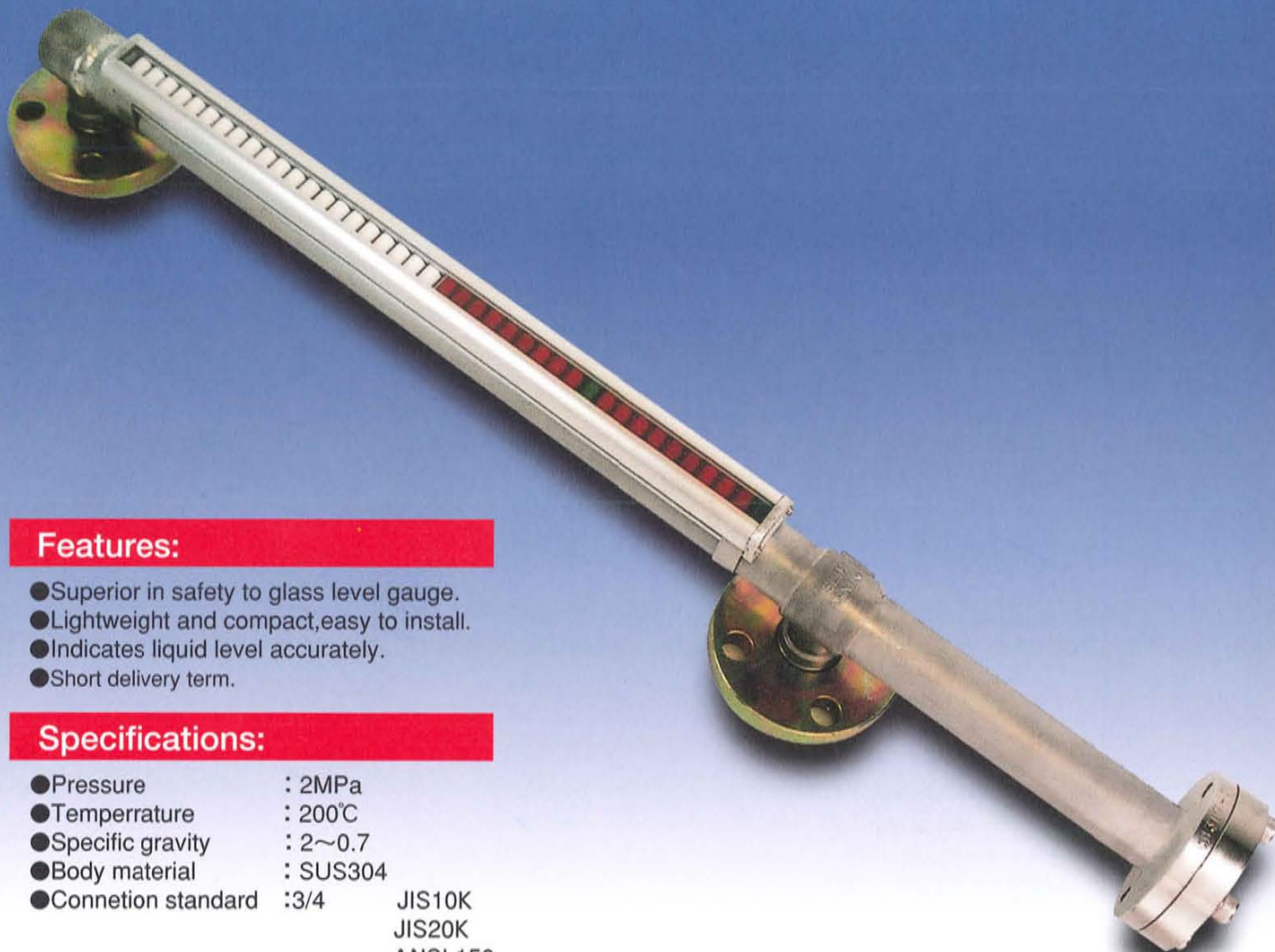


SLIM

MAGNET FLOAT TYPE LEVEL GAUGE



Features:

- Superior in safety to glass level gauge.
- Lightweight and compact, easy to install.
- Indicates liquid level accurately.
- Short delivery term.

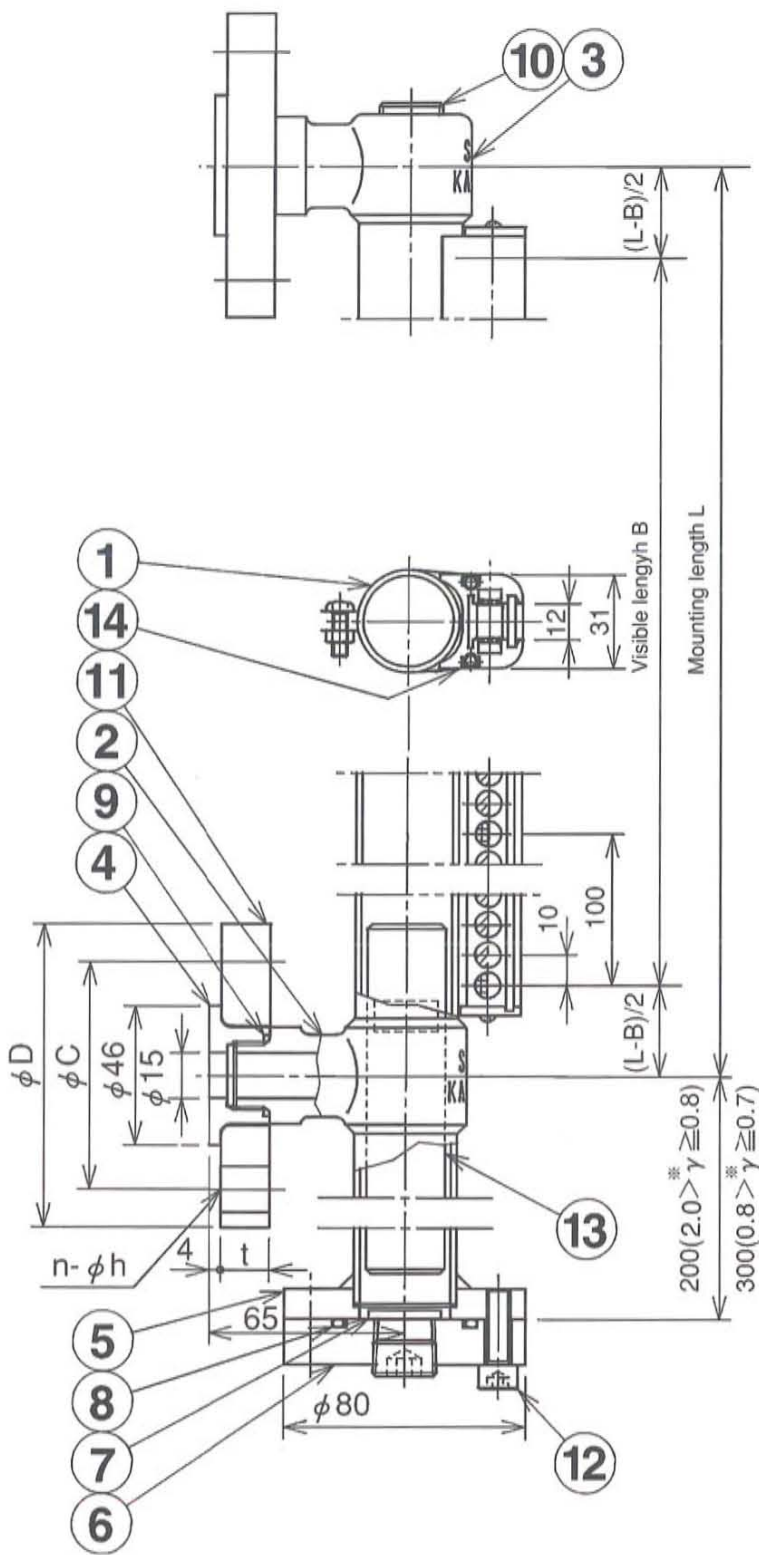
Specifications:

- Pressure : 2MPa
- Temperature : 200°C
- Specific gravity : 2~0.7
- Body material : SUS304
- Connection standard : 3/4 JIS10K
JIS20K
ANSI 150
ANSI 300

SLIM ensures your safety. Kaneko's technology offers high safety at a low price and in a short delivery term.

Silent Technology KANEKO





Standard Specifications

- Maximum working pressure : 2MPa
- Maximum liquid temperature : 200°C
- Specific gravity of liquid : 2~0.7
- Liquid viscosity : 100cP (0.1Pa·S)

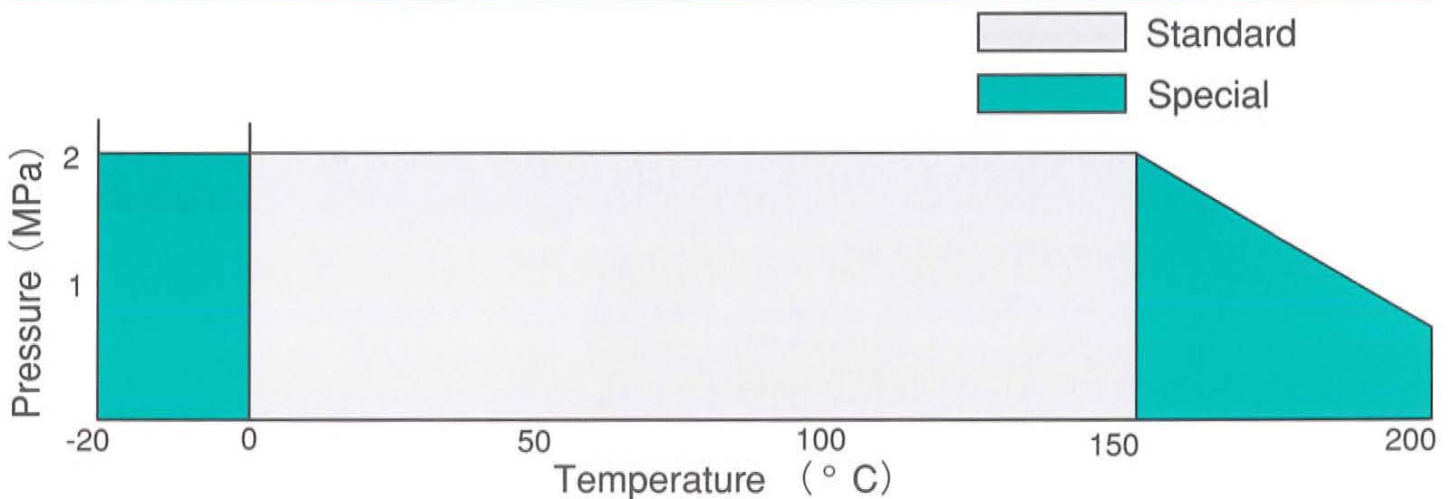
Optional Specifications

- Drain Valve (ball valve)
- Reed switch
- Scale plate
- Descaling ring

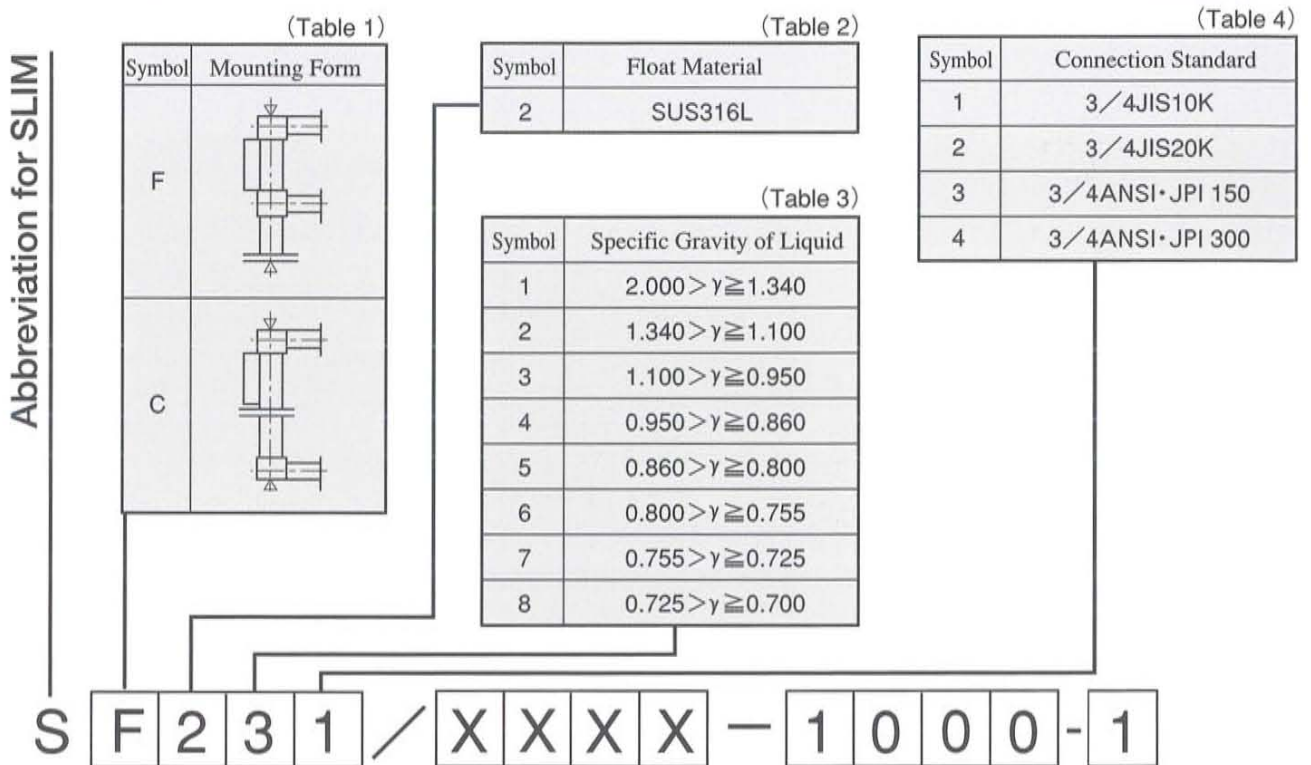
No.	Name	Q'ty/Set	Material	Remarks
1	Chamber	1SET	SUS304TP	
2	Tee	1 (0)	SCS13	
3	Elbow	1 (0)	SCS13	
4	Boss	2	SUS304	
5	Flange	1	SUS304	
6	Flange	1	SUS304	
7	Stopper	1	SUS304	
8	O-ring	1	FEP	
9	O-ring	2	FEP	
10	Plug	2	SUS304	R1/2
11	Flange	2	A105	10K:SS400
12	Set screw	4	SUS304	
13	Float	1	SUS316L	
14	Indicator	1SET	A6063/Polycarbonate/Acryl	

Note:For mounting form [C], values given in parentheses apply.

Pressure-Temperature rating of SLIM



DESIGNATION OF SLIM



(Table 5)

Symbol	Optional Specifications
D	Drain valve
H	Flame-proof reed switch
N	General type reed switch
S	Scale plate
U	Descaling ring
X	No option

(Table 6)

Mounting Length (mm)	Measured(Visible)Length(mm)	
	Mounting Form[F]	Mounting Form[C]
360~559	300	
560~759	500	300
760~959	700	500
960~1159	900	700
1160~1359	1100	900
1360~1559	1300	1100
1560~1759	1500	1300
1760~1959	1700	1500
1960~2159	1900	1700
2160~2359		1900

(Table 7)

Symbol	Viewing Direction(from Above)
1	
3	
5	

●Visible length and mounting length: The visible length is a standard value given in Table 6, so the mounting length (center-to-center distance between flanges) shall be set at a value within the range shown in the table, with the visible length as the basis.

●Mounting form: [F]-In addition to mounting length, it is necessary to provide a float mounting length below the lower connecting pipe. [C]-The float mounting dimension is included in the mounting length.

EXPLANATION OF OPTIONS

D: Drain valve
H: Flame-proof reed switch

N: General type reed switch

S: Scale plate
U: Descaling ring

RC1/2 SUS 316 ball valve
Contact: Self-sustaining type
Maximum working voltage: 125Vac, 100Vdc
Maximum capacity: 10VA
Protective construction: explosion-proof(d2G4)
Contact: Self-sustaining type
Maximum working voltage: 120Vac, 100Vdc
Maximum capacity: 10VA
Protective construction: IP protection rating(IP67)
SUS304, graduated at 50mm pitches
Used for prevention of erroneous operation that may result from the adhesion to the float of metallic powder when included in liquid.

- Solenoid Valves
- Liquid Level Gauges
- Breather Vales,Flame Arresters
- Gas seal Units
- Safety Valves,Relief Valves,Reducing Valves
- Auto matic Control Units
- Cylinder Valves for Rolling Mills
- Aux iliaries for Automatic Operation
- JIS Valves & Cocks



Established in 1918.

Kaneko offers superior technologies.

KANEKO SANGYO CO.,LTD

KANEKO URL: <http://www.kaneko.co.jp>

Head office : 10-6 Shiba 5-chome, Minato-ku, Tokyo 108-0014 JAPAN

Tel : 03-3455-1411 Fax : 03-3456-5820

Agent