

SEETRU GAUGES

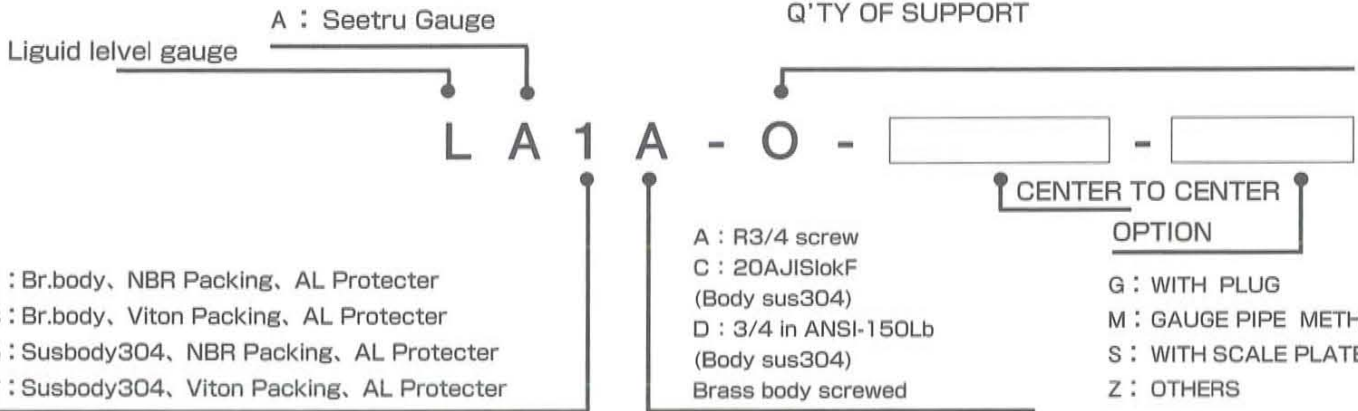


Stainless steel body
(screwed)
Stainless steel body
(flanged)
Brass body screwed

Silent Technology KANEKO



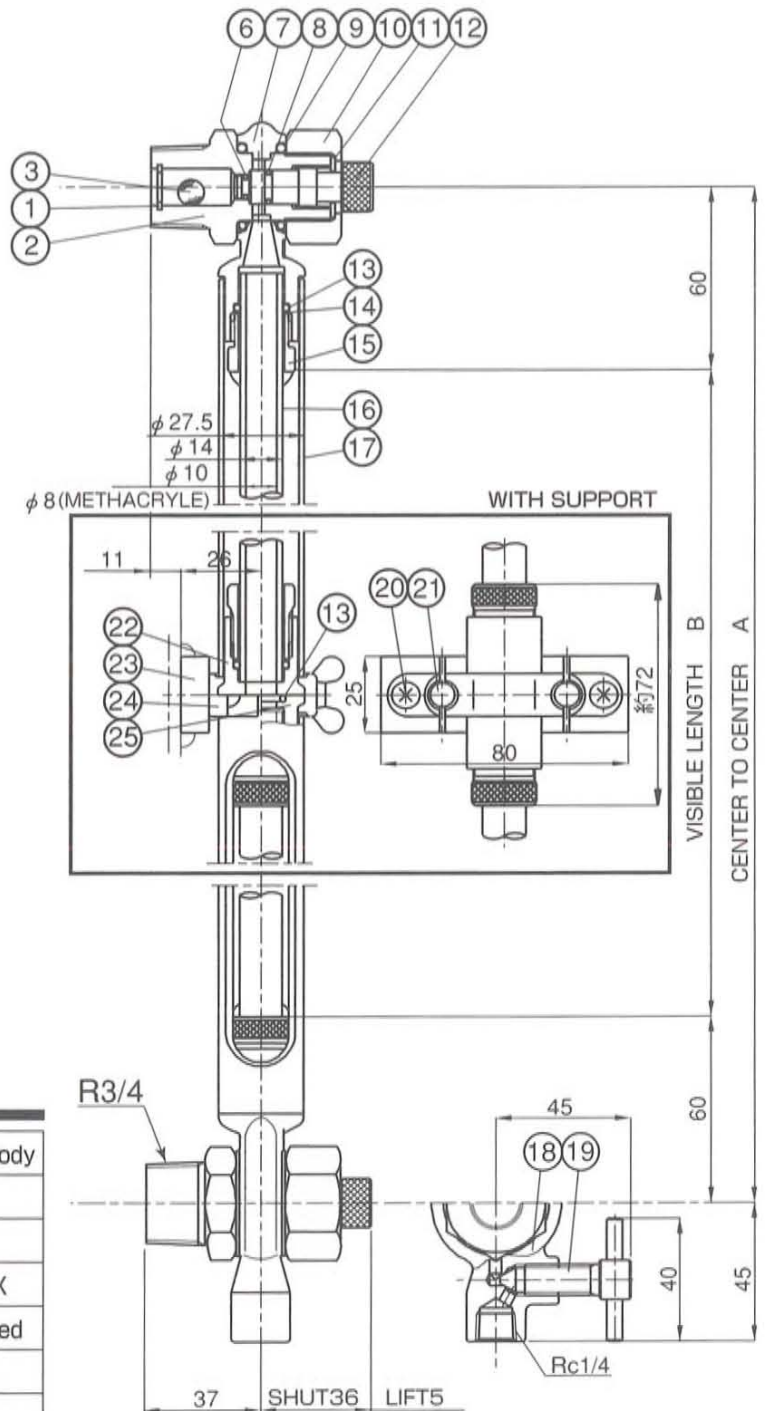
Model Number



Brass body screwed

No.	NAME OF PARTS	No. OF UNIT	MATERIAL
1	SUNAP RING	2	SUS304
2	BODY	2	C3604
3	CHECK BALL	2	SUS304
4			
5			
6	"O"RING	2	NBR
7	COLLAR "A"	1	C3771
8	"O"RING	2	NBR
9	"O"RING	4	NBR
10	RETAINER	2	C3604
11	RING	2	SUS304
12	VALVE	2	C3604
13	"O"RING	2+3n	NBR
14	WASHER	2+2n	SUS304
15	GLAND	2+2n	C3604
16	GAUGE PIPE	1Set	GLASS or METHACRYLE
17	PROTECTOR	1Set	A6063
18	COLLAR "B"	1	C3771
19	DRAIN VALVE	1	C3604
20	MACHINE SCREW	2n	SS400
21	BOLT	2n	SS400
22	PACKING BOX "A"	n	C3604
23	BASE	n	SS400
24	SUPPORT	n	C3771
25	PACKING BOX "B"	n	C3604

n:Q'TY OF SUPPORT



Standard issue

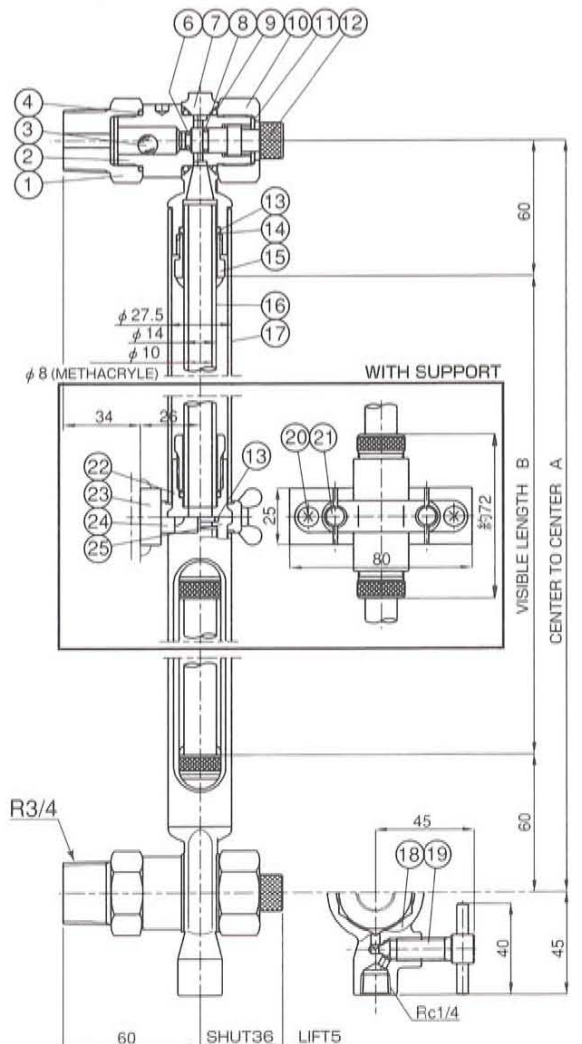
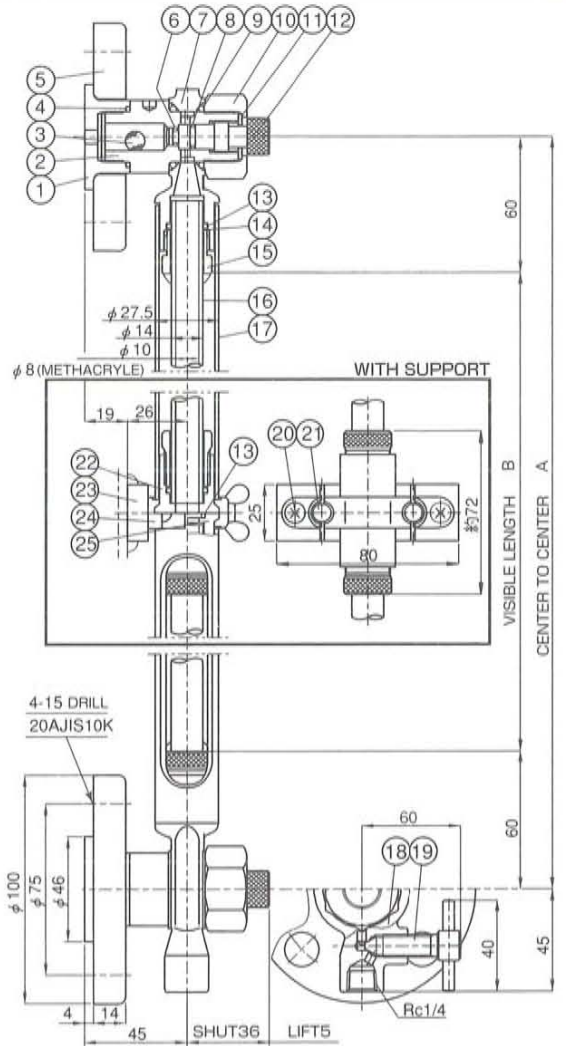
Material	Brass Body	Stainless steel body
USED LIQUID	WATER, OIL, Chemicals	
WORKING TEMP	80°C	80°C
WORKING PRESS	1.0Mpa MAX	1.0Mpa MAX
TANK CONNECTION	R3/4	R3/4 Flanged
SHELL TEST	1.5Mpa	1.5Mpa
CENTER TO CENTER	less than 1500	

Please contact us when the working temperature is over 80°C

Stainless steel body flanged/screwed

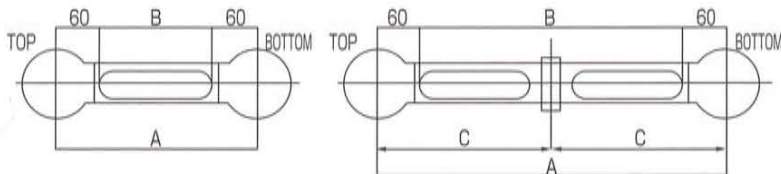
No.	NAME OF PARTS	No. OF UNIT	MATERIAL
1	BASE	2	SUS304
2	BODY	2	SUS304
3	CHECK BALL	2	SUS304
4	"O"RING	2	VITON
5	FLANGE (LOOSE)	2	SS400
6	"O"RING	2	VITON
7	COLLAR "A"	1	SCS13
8	"O"RING	2	VITON
9	"O"RING	4	VITON
10	RETAINER	2	SS400
11	RING	2	SUS304
12	VALVE	2	SUS304
13	"O"RING	2+3n	VITON
14	WASHER	2+2n	SUS304
15	GLAND	2+2n	SUS304
16	GAUGE PIPE	1Set	GLASS or METHACRYLE
17	PROTECTOR	1Set	A6063 or METHACRYLE
18	COLLAR "B"	1	SCS13
19	DRAIN VALVE	1	SUS304
20	MACHINE SCREW	2n	SS400
21	BOLT	2n	SS400
22	PACKING BOX "A"	n	SUS304
23	BASE	n	SS400
24	SUPPORT	n	C3771
25	PACKING BOX "B"	n	SUS304

n:Q'TY OF SUPPORT

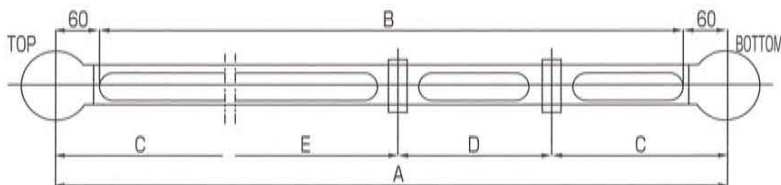


SINGLE WINDOW

SINGLE SUPPORT



DOUBLE or MORE SUPPORTS



	SINGLE WINDOW	WITH SUPPORT
CENTER TO CENTER "A"	MIN. 300mm~ MAX. 1500mm	ABOVE 1501mm
VISIBLE LENGTH "B"	A - 120	A-120,C-96,D-72,E-72
GAUGE PIPE LENGTH	A - 55	C-33,D-12,E-12
PROTECTOR LENGTH	A - 60	C-38,D-17,E-17



ISO9001 Approved, Certified Business for High-pressure Gas Test and Manufacture

Kaneko Sangyo Co., Ltd.

Home page: <http://www.kaneko.co.jp>

Head Office: 5-10-6, Shiba, Minato-ku, Tokyo 108-0014, Japan
Tel: 03-3455-1414 Fax: 03-3456-5820

Hiratsuka Factory: 5-3-9, Higashiyawata, Hiratsuka City, Kanagawa 254-0016, Japan
Tel: 0463-23-1511 Fax: 0463-23-8055

FUkuyama Office: 2-24-25, Minamizaoh-cho, Fukuyama-city, Hiroshima 721-0973, Japan
Tel: 084-923-5877 Fax: 084-923-5892

Shanghai Kaneko: No.318 Xiao Wan RD, Shanghai Comprehensive Industrial Development
Zone. Zong Xing Area Shanghai 201400 China.
Tel: 8621-5743-3600 Fax: 8621-5743-3700
[Http://www.kaneko.com.cn](http://www.kaneko.com.cn)

KANEKO KOREA CO;LTD: 202-307, Bucheon Techno-Park Sangyong 3rd, 36-1, Samjeong-Dong,
Ojeong-Gu, Bucheon-Si, Gyeonggi-Do, KOREA
Tel: 032-624-0593 Fax: 032-624-0590
